



Self-Propelled Telescopic Booms

S[®]-65 XC™

Specifications

Models	S-65 XC
Measurements	Metric
Working height maximum*	21.84 m
Platform height maximum	19.84 m
Horizontal reach maximum	16.51 m
Below ground reach	1.70 m
▲ Platform length - 8 ft model	0.91 m
▲ Platform width - 8 ft model	2.44 m
▲ Height - stowed	2.72 m
▲ Length - stowed	9.73 m
▲ Width	2.49 m
▲ Wheelbase	2.52 m
▲ Ground clearance - center	0.37 m

Productivity

Maximum lift capacity - unrestricted	300 kg
- restricted	454 kg
Platform rotation	160°
Vertical jib rotation - up/down	135°
Turntable rotation	360° continuous
Turntable tailswing - axles retracted	1.41 m
Drive speed - stowed	4.8 km/h
- raised (below 60 ft)	1.1 km/h
Gradeability - stowed**	45%
Turning radius - axle retracted: inside	8.03 m
outside	9.96 m
Controls	12 V DC proportional
Tires - RT lug	355/55D 625 FF

Power

Power source	48 hp (35.79 kW) Deutz diesel T4f D2.9L4
	48 hp (35.79 kW) Deutz diesel T4i D2011L03i
	49 hp (36.54 kW) Perkins turbo diesel T4f 404F-E22T
	74 hp (55.18 kW) Deutz turbo diesel T4i D2011L04i
	74 hp, Deutz Turbo Diesel T4f TD2.9L4

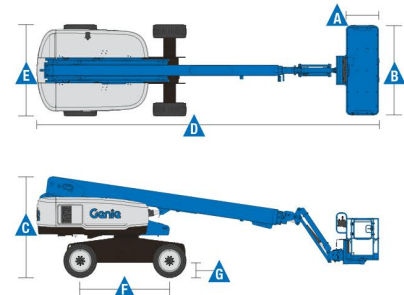
Auxiliary power unit	12 V DC
Hydraulic tank capacity	170 L
Fuel tank capacity diesel	132 L

Weight***

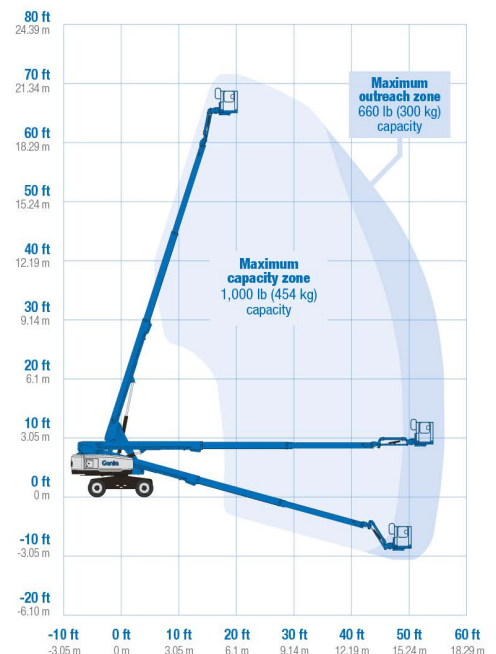
4WD	11,294 kg
-----	-----------

Standards Compliance

ANSI/SAIA A92.20, CSA B354.7, GB 25849, EN 280, AS/NZS 1418.10



Range Of Motion S-65 XC



* The metric equivalent of working height adds 2 m to platform height. U.S. adds 6 ft to platform height.

** Gradeability applies to driving on slopes, see operator's manual for details regarding slope ratings.

*** Weight will vary depending on slope, see operator's manual for details regarding slope ratings.

**** S-60 XC not available with track system