

URW-547 (4.0t x 2.5m)

- Total width 1.4m
- Max working radius 17.83m
- Diesel powered and optional mains electric
- Zero length increase with electric option
- Operator control of outrigger extension
- Intelligent voice warning system
- Radio remote control as standard
- Working area limitation
- Slew limitation (optional)
- Intelligent throttle activation for economy and ecology



Max Boom Length 18.02m

Max Lifting Height 18.2m

Capacity 4.0t x 2.5m

Weight 5010 - 5160kg



The URW-547 offers extended reach, providing a maximum lifting height of 18.2 metres and a maximum lifting capacity of 4 tonnes as standard on the main boom. The outrigger footprint remains the same as the URW-506, maintaining its compact dimensions. An option of additional length is given with a quickly installed searcher hook, with angles varying from 0° to 60° and a maximum capacity of 500kgs.

CRANE SPECIFICATIONS

Crane capacity	capacity:	4.0t x 2.5m
Max working radius	max:	17.83m
Max lifting height	approx:	18.2m
Rope length	max:	22.32m (4 fall), 46.13m (2 fall), 93.76m (1 fall)
Dimensions	folded:	4955mm (l) x 1400mm (w) x 1980mm (h)
Weight	unladen:	5010kg (5160kg with electric option)
Point loadings	Due to the many variables involved, point loadings are only available on request	
Hook speed	approx:	14m/min (with 5 layers and 4 falls)
Telescopic system	boom length:	3.99 - 18.02m
	telescoping speed:	14.03m/35 seconds
	boom type:	7 section hydraulically telescoping boom, hexagonal box construction
Derricking angle/speed	approx:	0 - 80°/18.0 seconds
Slewing angle/speed	approx:	360° (continuous) 2.5min rpm
Traction system	drive:	hydrostatic 2-speed, stepless forward and reverse
	travel speed:	0 - 3km/h
	gradeability:	± 20° (vertical) 20° (traverse)
	track ground length:	1750mm
	track ground pressure:	47kPa (0.48kg/cm ²)
	track width:	300mm
Engine	manufacturer:	Mitsubishi / Yanmar
	fuel:	diesel (electric dual power option)
	maximum output:	17.5kW (23.8PS) / 2100min rpm
	starting method:	electric
	tank capacity:	40 litres
Electric motor	power:	7.5kW
	voltage:	400v AC 50/60Hz
Standard equipment	computer controlled moment limiter (safe load indicator), radio remote control, overwinding alarm, computer controlled intelligent voice warning system, multi-function operation by radio remote control, intelligent throttle activation, automatic hook slow, overload warning alarms, overload warning lamps, working area limitation	
Optional equipment	1 fall hook block, 2 fall hook block, mains electric dual power (400v), low marking tracks, slew limitation, searcher hook small 500kg, radio remote control with feedback display, data logging	

REMOTES



Standard radio remote control



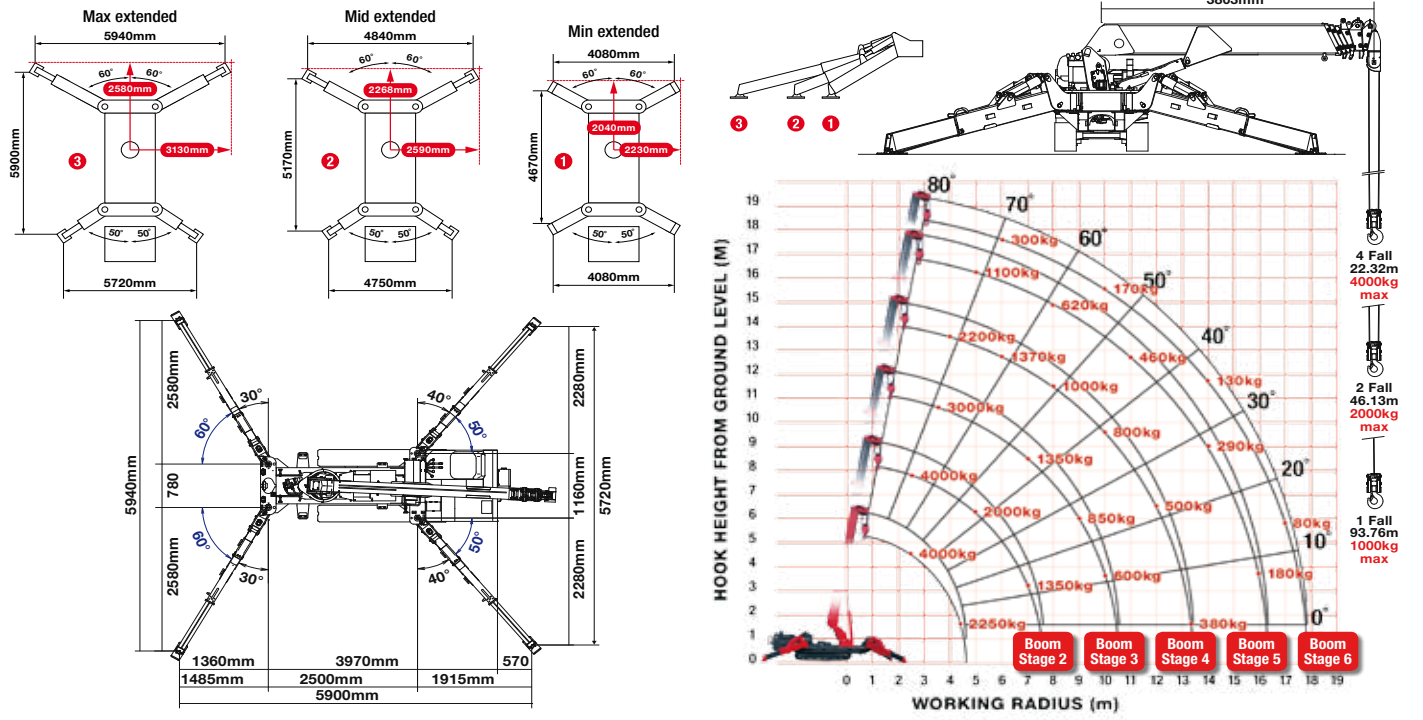
Optional radio remote control with digital feedback



MINI SPIDER CRANE



RATED LOADS & OUTRIGGER POSITIONS



SECOND STAGE EXTENDED 3.99 - 7.7M BOOM LENGTH		3.99	4.0	4.5	5.0	5.5	6.0	7.0	7.25	7.51
Working radius	m	up to 2.5	2.7	3.0	3.5	4.0	4.5	5.0	5.5	6.0
Outrigger	kg	4,000	3,850	3,500	3,000	2,550	2,250	2,000	1,800	1,630
	kg	4,000	3,850	3,500	3,000	2,550	2,200	1,850	1,630	1,400
	kg	4,000	3,850	3,500	3,000	2,550	2,100	1,640	1,320	1,080

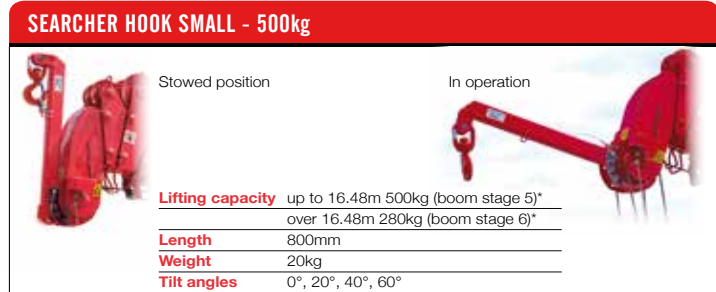
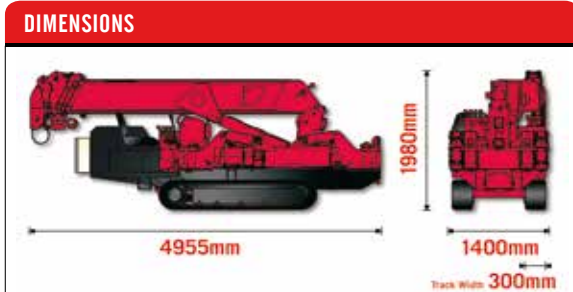
THIRD STAGE EXTENDED 7.7 - 10.66M BOOM LENGTH		7.7	8.0	8.5	9.0	10.0	10.20	10.47
Working radius	m	up to 3.5	4.0	5.0	6.0	7.0	8.0	9.0
Outrigger	kg	3,000	2,550	2,000	1,650	1,350	1,100	850
	kg	3,000	2,550	1,850	1,400	1,100	830	630
	kg	3,000	2,550	1,650	1,150	840	620	460

FOURTH STAGE EXTENDED 10.66 - 13.57M BOOM LENGTH		10.66	11.0	11.5	12.0	13.0	13.38
Working radius	m	up to 4.0	4.5	5.0	6.0	7.0	8.0
Outrigger	kg	2,200	1,900	1,700	1,370	1,150	1,000
	kg	2,200	1,800	1,600	1,300	1,050	850
	kg	2,200	1,800	1,600	1,150	800	650

FIFTH STAGE EXTENDED 13.57 - 16.48M BOOM LENGTH		13.57	14.0	14.5	15.0	16.0	16.29
Working radius	m	up to 5.0	5.5	6.0	7.0	8.0	9.0
Outrigger	kg	1,100	950	880	730	620	570
	kg	1,100	950	880	700	600	520
	kg	1,100	950	850	700	500	420

SIXTH STAGE EXTENDED 16.48 - 18.02M BOOM LENGTH		16.48	17.0	17.5	18.0	18.33
Working radius	m	up to 6.0	7.0	8.0	9.0	10.0
Outrigger	kg	300	250	230	200	170
	kg	300	250	230	200	170
	kg	300	250	230	200	170

500kg SEARCHER HOOK RADIUS RATED (UP TO 16.48M)				500kg SEARCHER HOOK RADIUS RATED (OVER 16.48M)			
WORKING RADIUS (m)		OUTRIGGER POSITIONS (kg)		WORKING RADIUS (m)		OUTRIGGER POSITIONS (kg)	
MAX	MIN	MAX	MIN	MAX	MIN	MAX	MIN
3.0	500	500	500	3.0	280	280	280
4.0	500	500	500	4.0	280	280	280
5.0	500	500	500	5.0	280	280	280
6.0	500	500	500	6.0	280	280	280
7.0	400	350	320	7.0	210	210	210
8.0	330	280	220	8.0	170	170	170
9.0	270	230	180	9.0	130	130	130
10.0	220	190	130	10.0	100	100	100
11.0	180	160	100	11.0	NOT ALLOWED		
12.0	150	130					
13.0	130	100					
14.0	120						
15.0	110						
16.0	100						



* Please note: The URW-547 lifting capacity information is based on boom stages, not boom sections.