

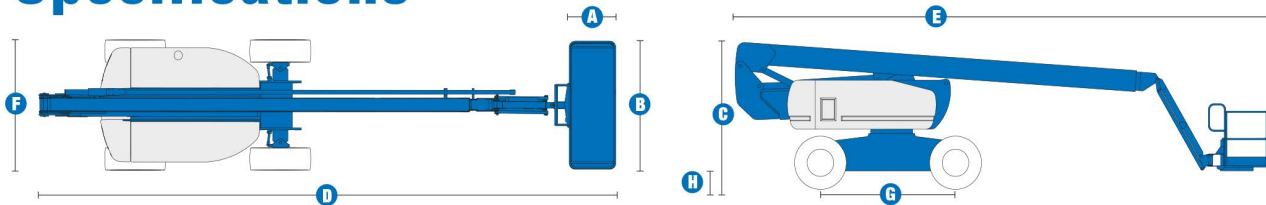


# SELF-PROPELLED ARTICULATING BOOMS

## Z™-80/60



### Specifications



#### MODEL Z™-80/60

| MEASUREMENTS                       | Metric  |
|------------------------------------|---------|
| Working height maximum*            | 25.77 m |
| Platform height maximum            | 23.77 m |
| Horizontal reach maximum           | 18.29 m |
| Up and over clearance maximum      | 8.83 m  |
| Below ground reach                 | 4.83 m  |
| <b>A</b> Platform length - 8 ft    | .91m    |
| <b>B</b> Platform width - 8 ft     | 2.44m   |
| <b>C</b> Height - stowed           | 3.00 m  |
| <b>D</b> Length - stowed           | 11.27 m |
| <b>E</b> Length - transport        | 11.27 m |
| <b>F</b> Width                     | 2.49 m  |
| <b>G</b> Wheelbase                 | 2.85 m  |
| <b>H</b> Ground clearance - center | .30 m   |

#### PRODUCTIVITY

|                                  |                      |
|----------------------------------|----------------------|
| Lift capacity                    | 227 kg               |
| Platform rotation                |                      |
| Vertical jib rotation            |                      |
| Turntable rotation               | 360° continuous      |
| Turntable tailswing - riser up   | 1.17 m               |
| Turntable tailswing - riser down | 2.24 m               |
| Drive speed - stowed             | 4.83 km/h            |
| Drive speed - raised**           | 1.1 km/h             |
| Lift speed to full height        | 76 sec               |
| Gradeability - 4WD - stowed***   | 45%                  |
| Turning radius - 2WS inside      | 4.42 m               |
| Turning radius - 2WS outside     | 7.47 m               |
| Turning radius - 4WS inside      | 2.13 m               |
| Turning radius - 4WS outside     | 4.57 m               |
| Controls                         | 12 V DC proportional |
| Tires                            | 18-625 NHS           |

#### POWER

Power source Deutz TD 2011 L04i 4 cylinder diesel 78 hp (58 kW)

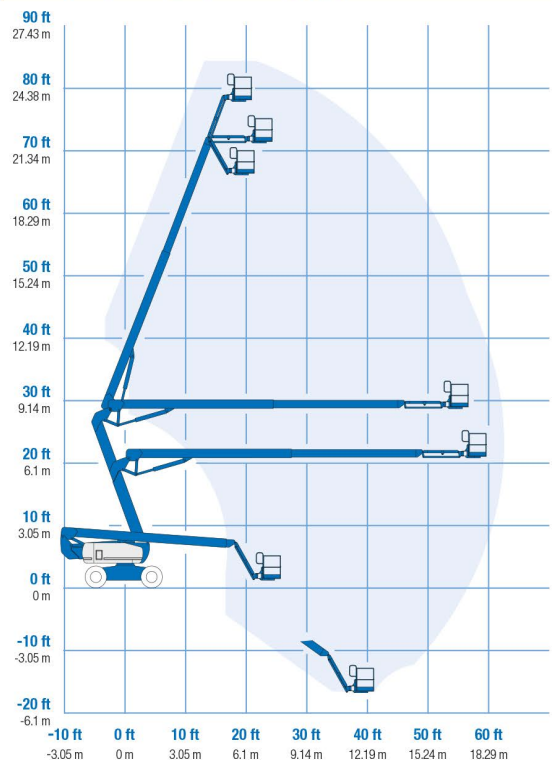
|                                      |         |
|--------------------------------------|---------|
| Auxiliary power unit                 | 12 V DC |
| Hydraulic tank capacity              | 170 L   |
| Fuel tank capacity – diesel machines | 132 L   |
| – gas/LPG machines                   | 114 L   |

#### WEIGHT\*\*\*\*

|     |           |
|-----|-----------|
| 4WS | 17,010 kg |
|-----|-----------|

**STANDARDS COMPLIANCE** ANSI A92.5, CSA B354.4, CE Compliance, AS 1418.10  
www.genieindustries.com

#### RANGE OF MOTION Z™-80/60



\* The metric equivalent of working height adds 2 m to platform height. U.S. adds 6 ft to platform height.

\*\* In lift mode (platform raised), the machine is designed to operate on firm, level surfaces only.

\*\*\* Gradeability applies to driving on slopes. See operator's manual for details regarding slope ratings.

\*\*\*\* Weight will vary depending on options and/or country standards.